





Welcome to the world of CHROMATEQ lighting control software.

Please read this manual carefully and thoroughly before using Wi-Light 2.

The information presented here provides a useful introduction to the wide range of features, settings and functions available in this mobile application.

This Wi-Light 2 Manual is written in English and French.
(Le manuel technique Wi-Light 2 est rédigé en anglais et en français.)

All products and software are developed and designed in France.

CHROMATEQ SARL
191 Allée de Lauzard
34980 St Gély du Fesc
FRANCE
VAT: FR18521458034
Siret: 52145803400027

Web & E-mail: www.chromateq.com
Phone: +33 952210755 / +86 13422062209

Whatsapp: +8613422062209
Wechat: Chromateq
QQ: 2908265661

Twitter: <https://twitter.com/Chromateq>
Facebook: <https://www.facebook.com/ChromateqCompany/>
YouTube : <https://www.youtube.com/c/chromateq>

Copyright Information and Disclaimer

Copyright © 2021 – CHROMATEQ. All rights reserved.

No part of this publication may be reproduced, distributed, or transmitted in any form or by any means, including photocopying, recording, or other electronic or mechanical methods, without the prior written permission of the publisher, except in the case of brief quotations embodied in critical reviews and certain other none commercial uses permitted by copyright law.

For permission requests, write to the publisher, addressed "Attention: Permissions Coordinator," at the address above.

SUMMARY

SUMMARY.....	3
QUICK START GUIDE.....	4
SMARTPHONE SERVER OR STANDALONE CONNECTION.....	4
WIFI/ETHERNET/DMX NETWORK EXAMPLE DIAGRAM.....	4
CONNECT ON ANDROID.....	5
CONNECT ON IOS.....	5
LAUNCHING THE WI-LIGHT 2 APP.....	6
PAGE DESCRIPTIONS.....	6
TRIGGER BUTTON PAGE.....	7
CUSTOMIZING ZONES AND BUTTONS.....	7
COLOUR AND LIVE CONTROL PAGE.....	9
CHANNELS PAGE AND CUSTOM CURSOR.....	10
SINGLE CHANNELS.....	10
CUSTOM CURSORS.....	11
SOFTWARE TIMELINE PAGE.....	12
INTERFACE SETTINGS.....	12
GENERAL SETTINGS.....	13
DISPLAY OPTIONS.....	14
ADVANCED NETWORK MODE.....	14
HOW TO USE WI-LIGHT 2 VIA INTERNET.....	15
CREATE YOUR WI-LIGHT 2 ACCOUNT.....	15
ADD / REMOVE YOUR INTERFACE TO YOUR ACCOUNT.....	15
CONTROL THE INTERFACE VIA INTERNET.....	16
DELETE YOUR ACCOUNT.....	16
TROUBLESHOOTING.....	16


QUICK START GUIDE

- To control an Ethernet DMX interface: 1) Connect the DMX Ethernet interface to the WiFi router
- To control a lighting software: 1) Launch the software on a computer connected to the WiFi network
- 2) Connect the Mobile device to the same WiFi network.
 - 3) Launch the Wi Light 2 App
 - 4) Begin configuring and using the Wi Light 2 app

SMARTPHONE SERVER OR STANDALONE CONNECTION

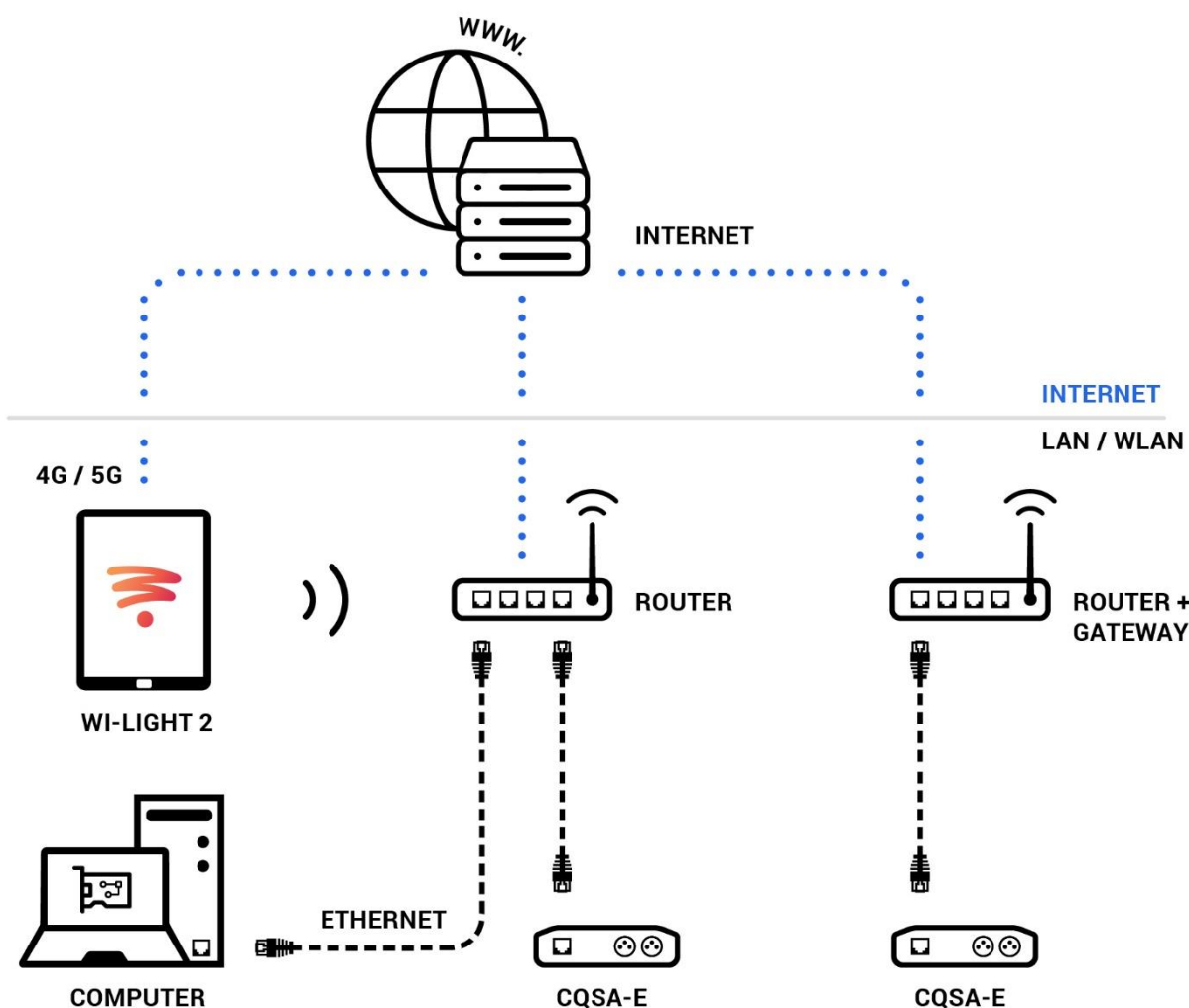
With the Wi-light 2 application, you can communicate with lighting control software or with standalone Ethernet interfaces. First, connect your smartphone/tablet to the same WiFi network or WiFi access point as your computer or interface.

Software Smartphone Server: Launch the software, open the Tools menu and click on Start Smartphones server.

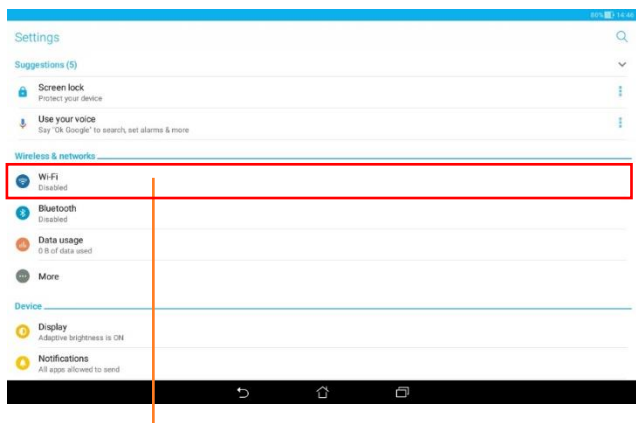
Ethernet Interfaces: When the interface is powered, press and hold the  button for 4 seconds to enter Advanced Function mode.

Then go to F2 select DHCP (dh) or static IP (iP) mode. Press  to activate the selected mode (DHCP is recommended)

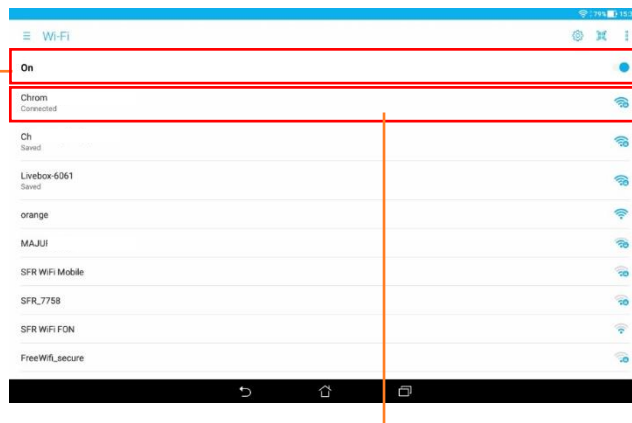
WIFI/ETHERNET/DMX NETWORK EXAMPLE DIAGRAM



CONNECT ON ANDROID



1- Go to the general settings and click on "Wi-Fi"



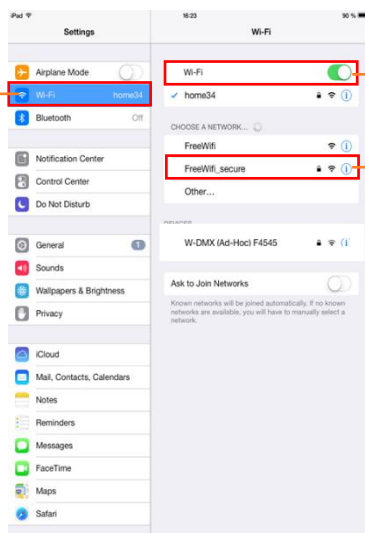
2- Turn on Wi-Fi on your mobile

3- Select the desired Wi-Fi network and enter the password if needed

After a few seconds, your mobile device will connect to the network and you can now launch the Wi Light 2 app. The app will detect the control software or DMX Ethernet devices automatically and display them in the settings page.

CONNECT ON IOS

1- Go to the general settings and click on "Wi-Fi"



2- Turn on the Wi-Fi on your mobile

3- Select the desired Wi-Fi network and enter the password if needed



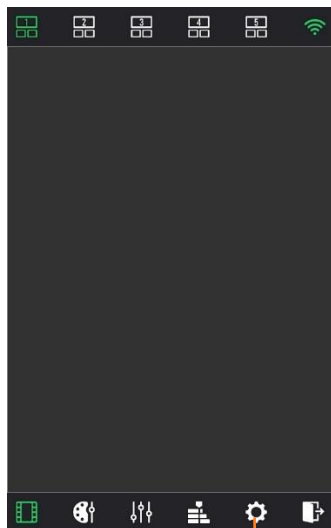
New network connections on Apple devices may require a few minutes to establish

After a few seconds, the mobile will be connected to the network and you can now launch the Wi Light 2 app. The app will detect the control software or DMX Ethernet devices automatically and display them in the settings page.

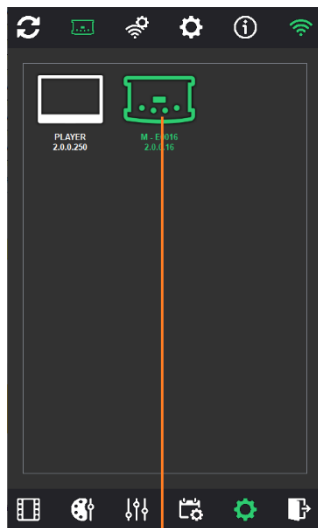
IP addresses are managed by the WiFi router. In DHCP mode, the IP addresses are assigned automatically, but it is also possible to set static IP addresses for the smartphone/tablet, device and computer. DHCP mode is recommended to simplify connections.

LAUNCHING THE WI-LIGHT 2 APP

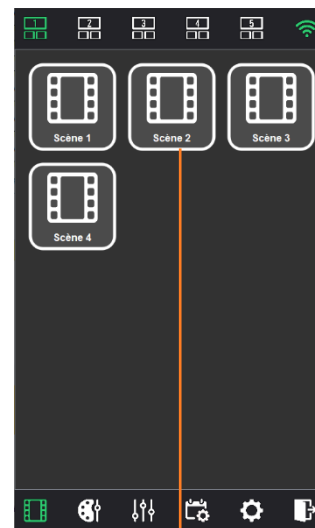
When you launch the Wi-Light 2 app, it will automatically detect the interface or software smartphone server on the network where your smartphone/tablet is connected. Each detected device is listed and displayed in the Settings page of the App. If multiple interfaces are connected to the same network, select the interface you want to use. You can select and control only 1 device per time.



1- Go to Settings page



2- Select your device or computer with software

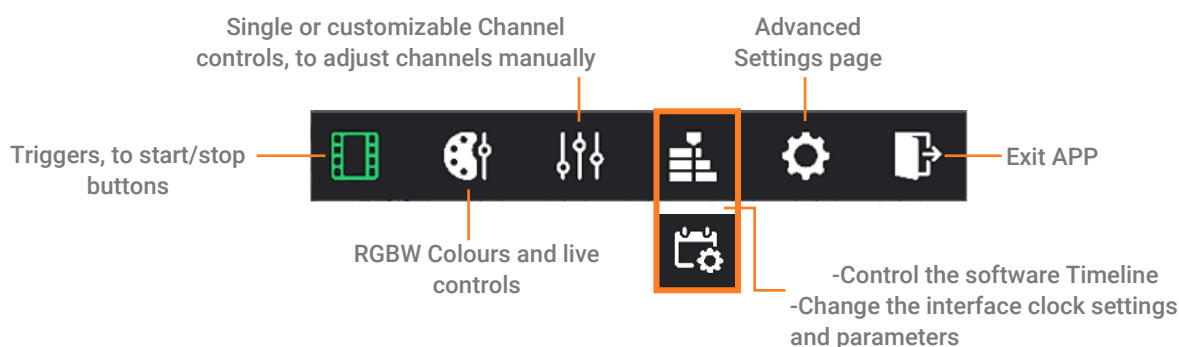


3- The content of your device or project is displayed in each zone. Press buttons to start/stop content.

NOTE: In the Settings page, the Application will show if your interface or software is connected to internet or locally.

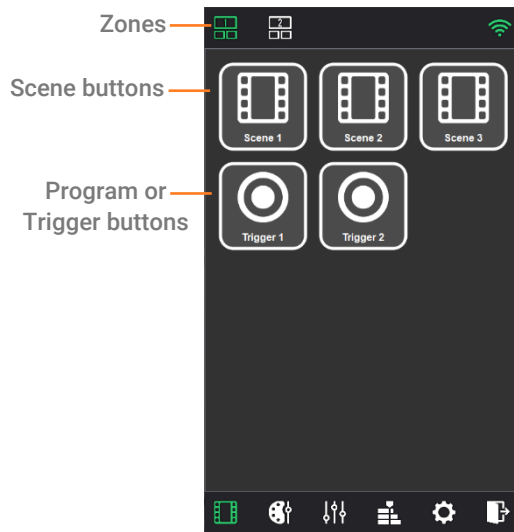
PAGE DESCRIPTIONS

Display the desired app page by selecting its icon in the lower menu bar.



TRIGGER BUTTON PAGE

Select the Scene page icon to display the list of scenes saved in the interface.

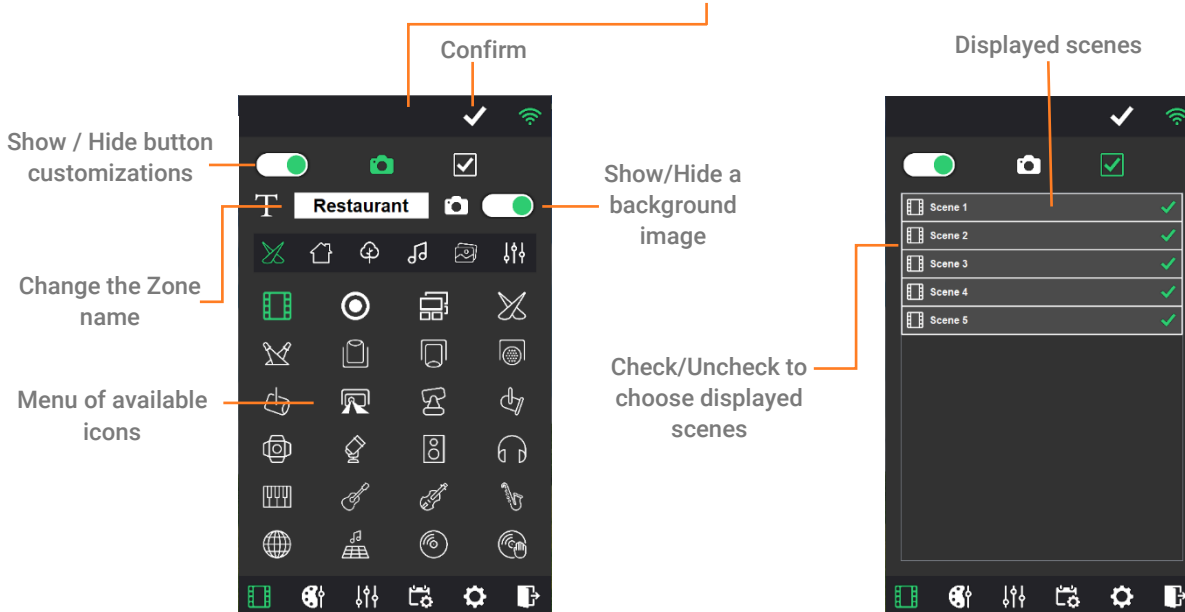


On top there is the list of zones setup in the interface. (x5 zones maximum)

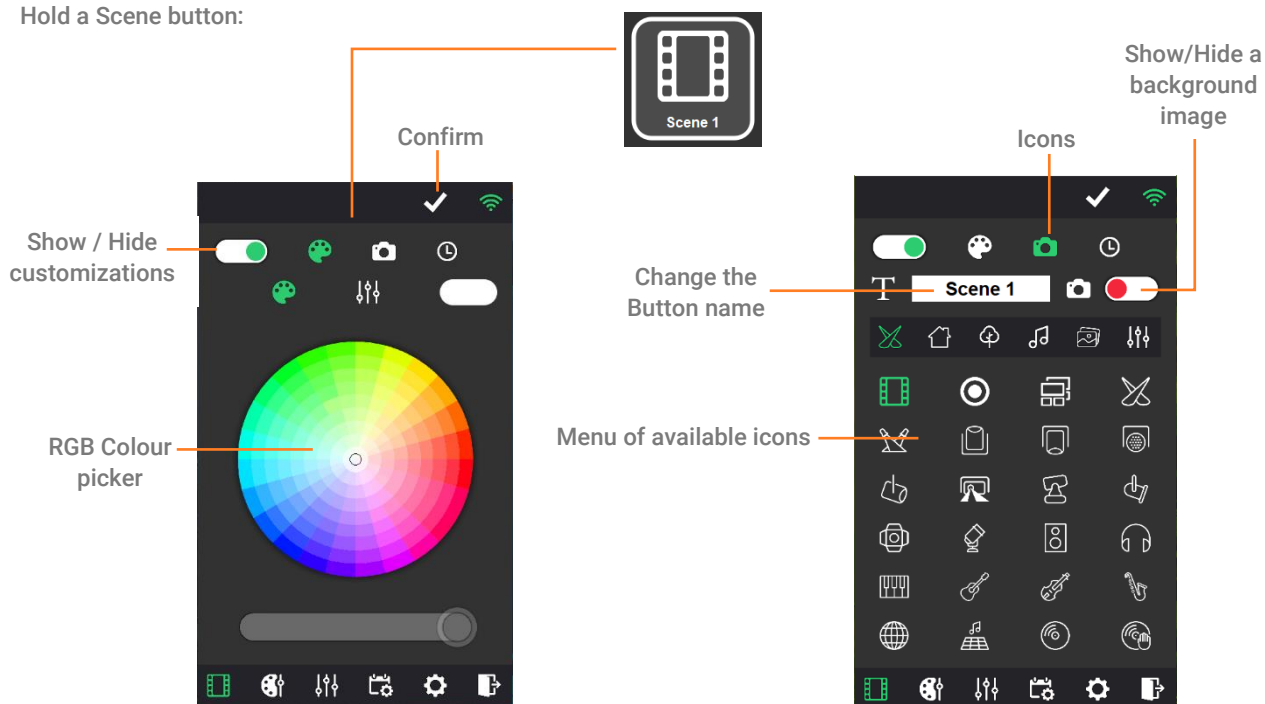
CUSTOMIZING ZONES AND BUTTONS

Hold a Scene button or Zone icon for several seconds to change its associated display icon.

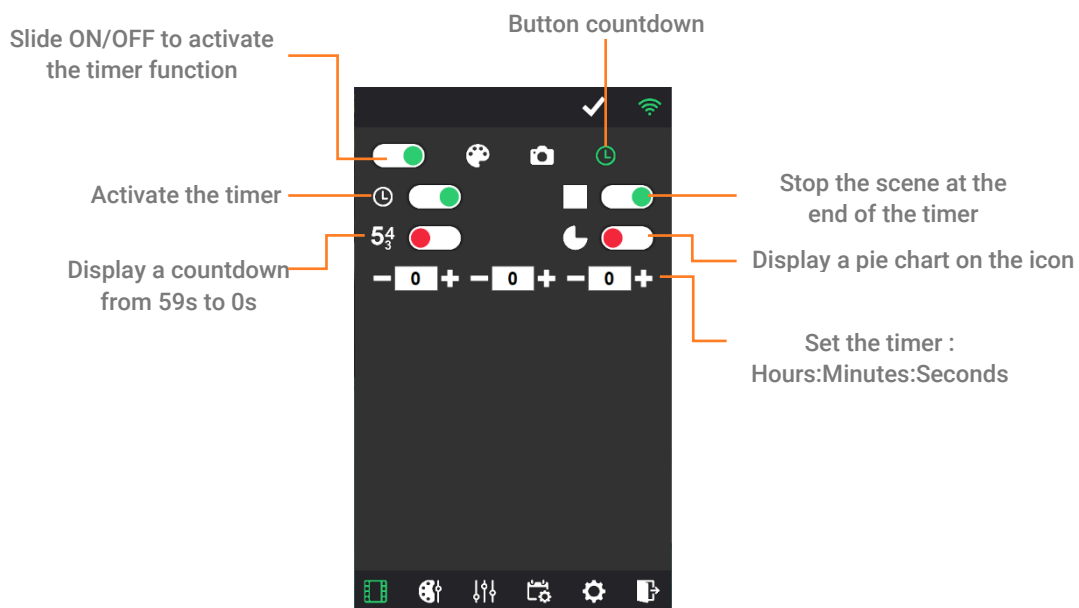
Hold a Zones button:



Hold a Scene button:

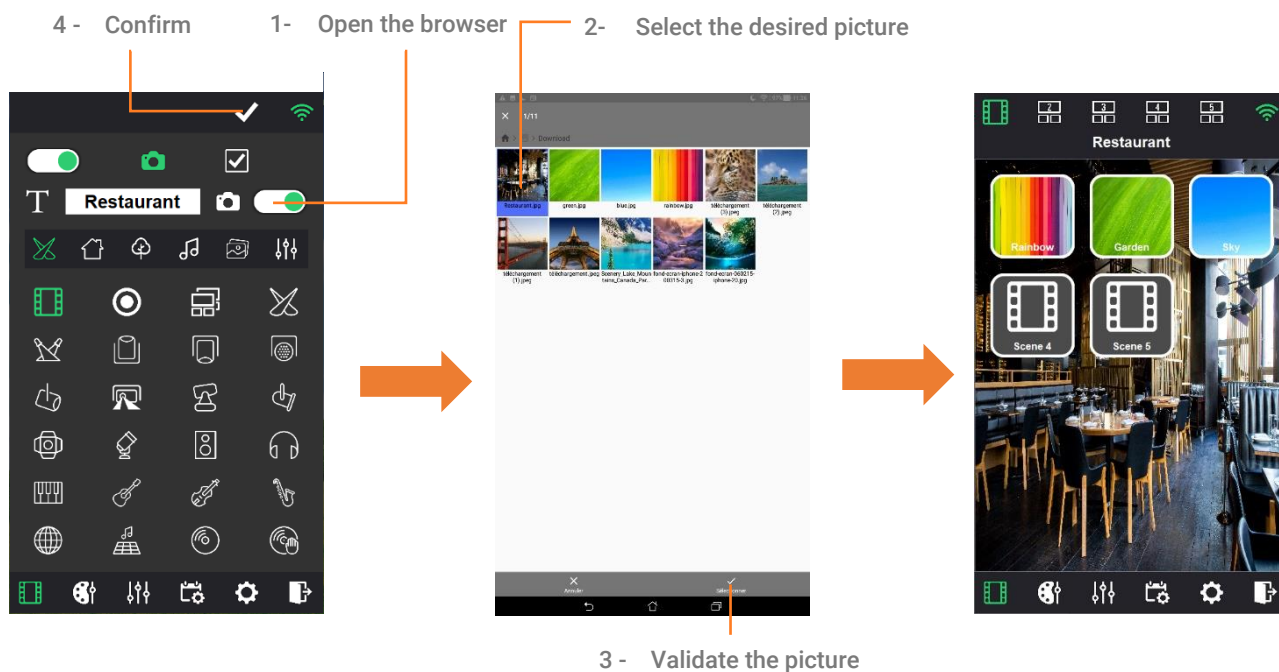


For each scene you can customise a countdown timer and choose if you want to stop the scene at its end.



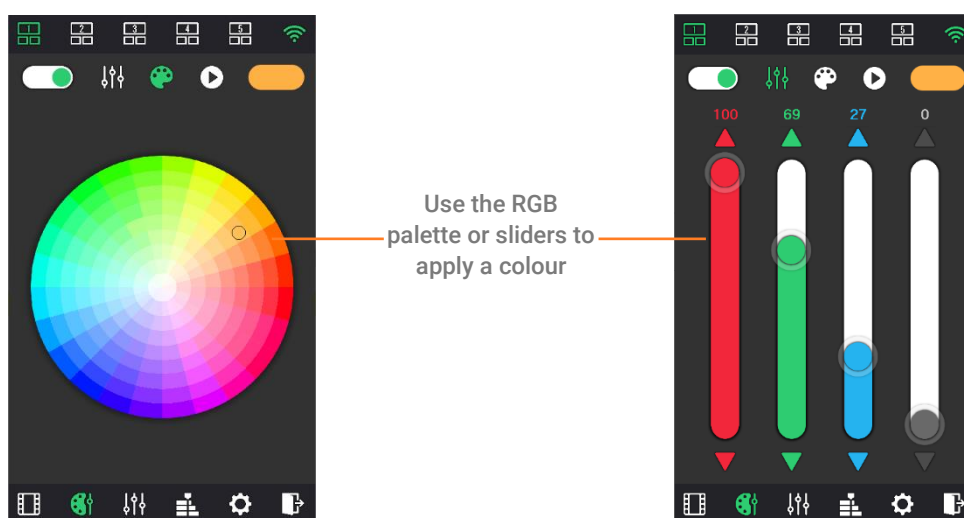
Background image

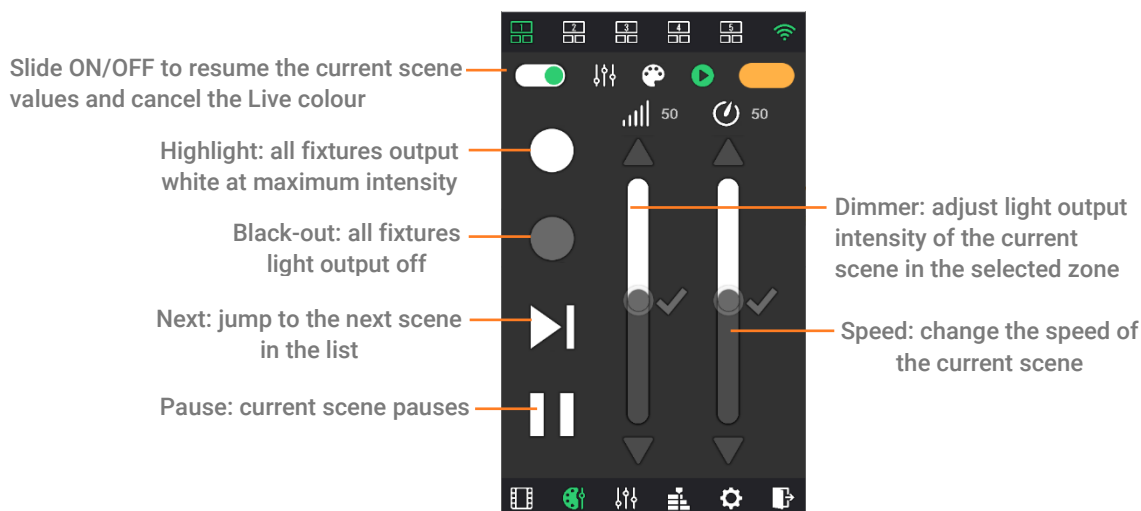
For each zone and scene button, to add a picture as a background click to “Display/Hide a background image” in the button customization mode.



COLOUR AND LIVE CONTROL PAGE

Select the colour page icon to display colour controls.
3 modes are available: colour picker (wheel), sliders and basic controls.

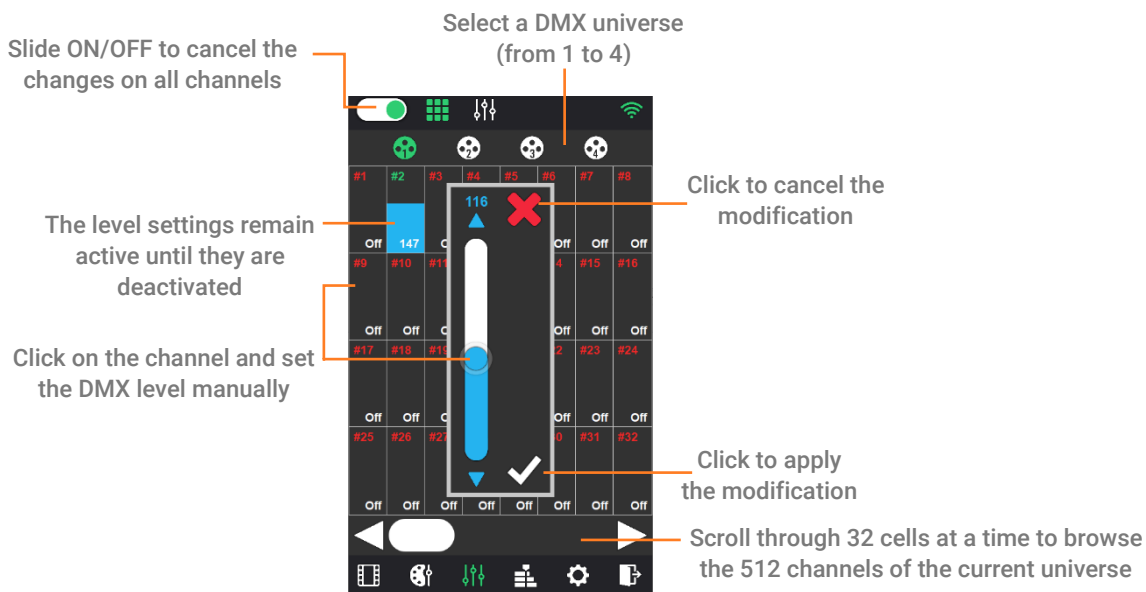




CHANNELS PAGE AND CUSTOM CURSOR

SINGLE CHANNELS

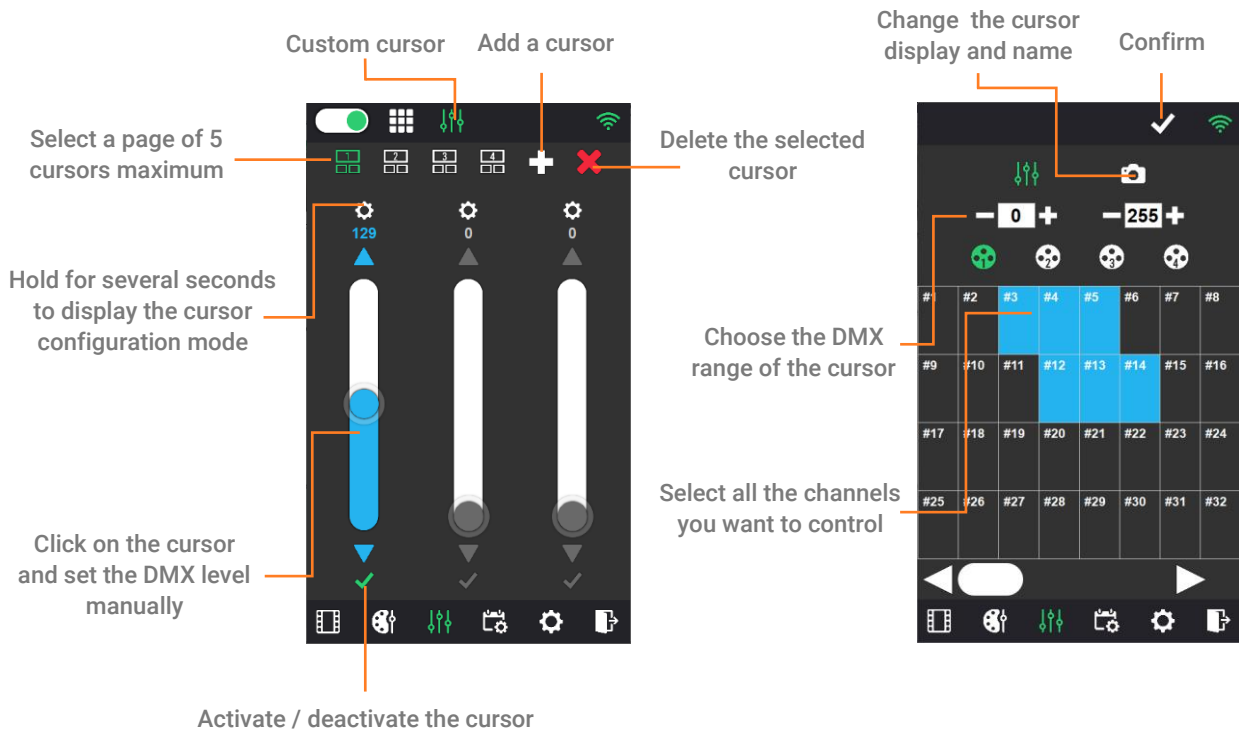
Select the channel page icon to manually control individual channels.



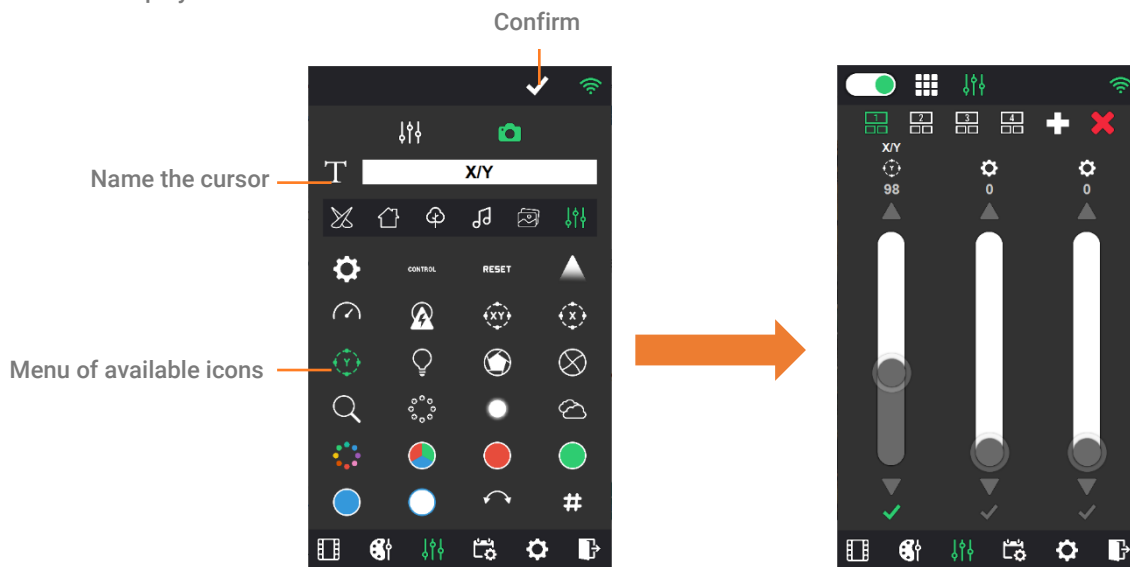
This mode can be used to adjust the light intensity of simple cool or warm white devices with a single DMX channel.

CUSTOM CURSORS

Custom cursors allow you to create customized sliders by selecting the channels that you want to control simultaneously. It is possible to make 4 pages of 5 custom sliders and up to 20 cursors.

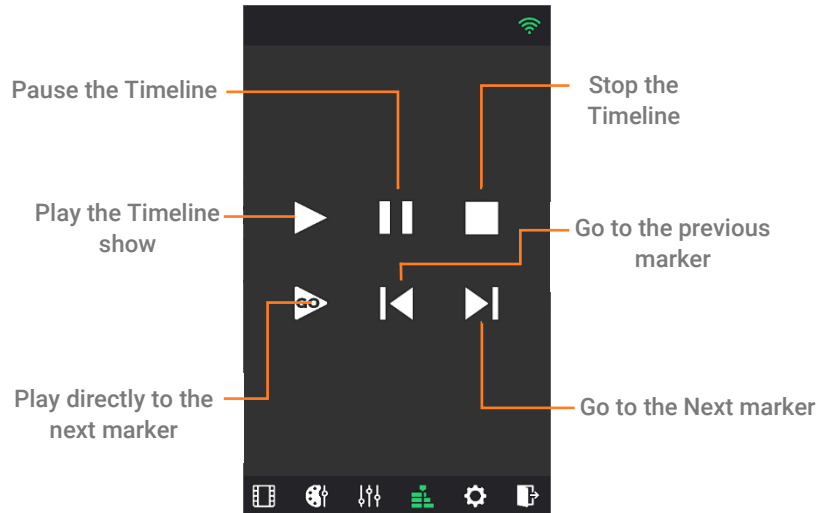


Cursor display customisation:



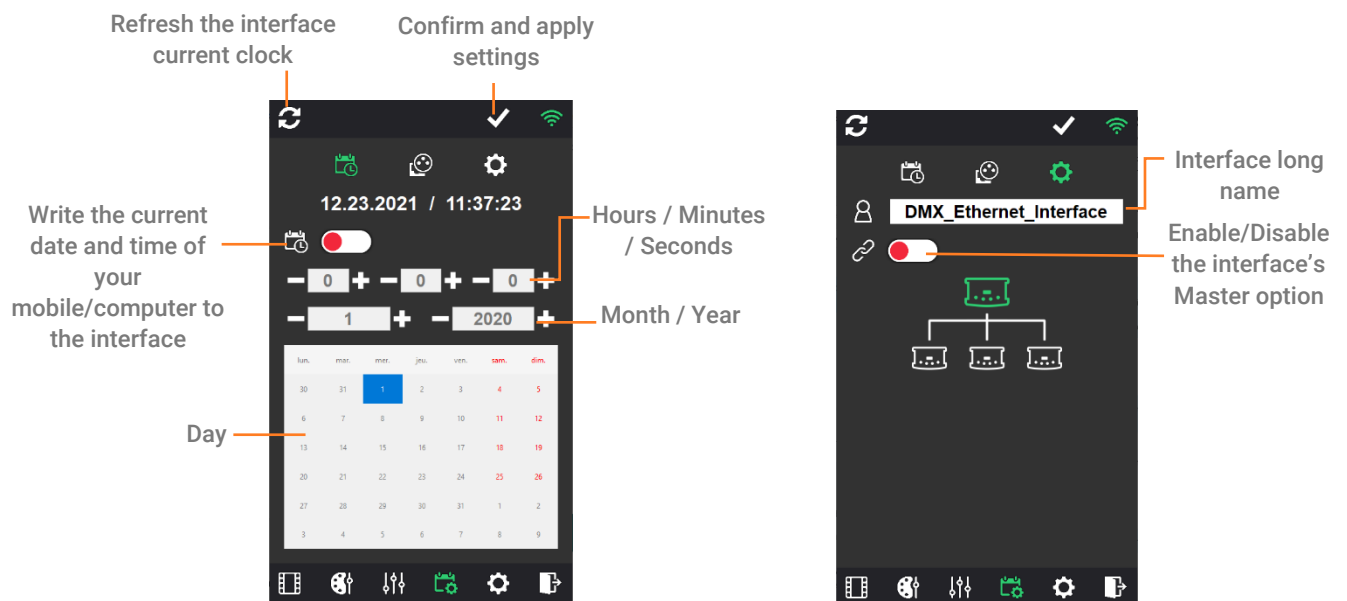
SOFTWARE TIMELINE PAGE

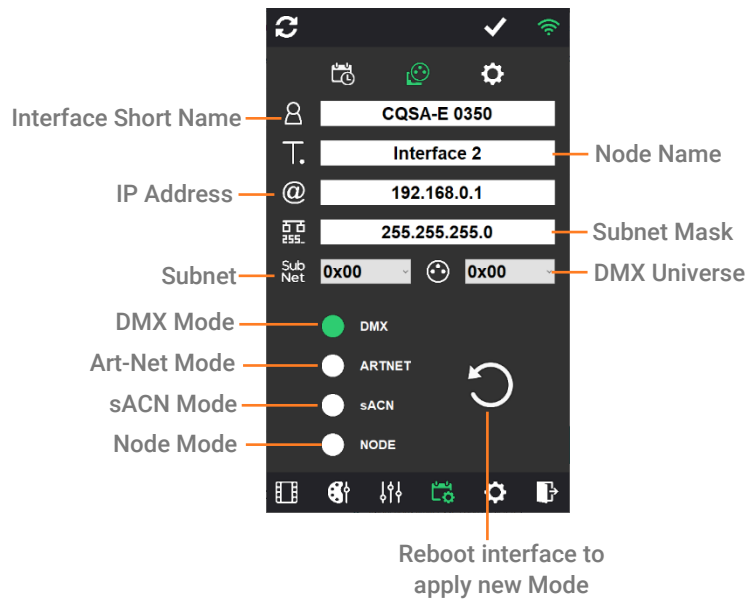
Select the Timeline page icon to control the software timeline.
If the show has several timeline tabs, only the current tab is controlled.



INTERFACE SETTINGS

Select the Interface Settings page icon to setup the selected standalone interface time and date, change the master/slave options, and change its network configurations and IP setting.



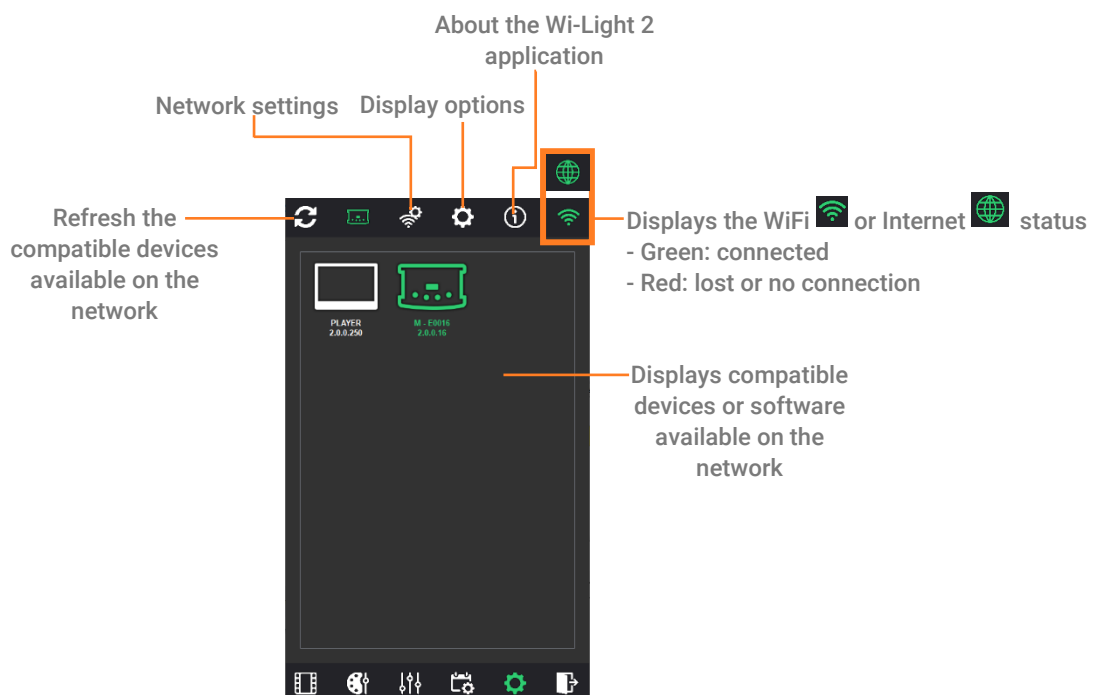


The interface can reboot in different modes:

- DMX (default) stand alone: DMX signal is sent on the 2 XLR connectors and show plays from the internal memory or from the SD card memory.
- ARTNET stand alone: Artnet signal is sent on the Interface Ethernet port and show plays from the SD card memory only.
- sACN stand alone: sACN signal is sent on the interface Ethernet port and show plays from the SD card memory only.
- NODE: Artnet signal is received from the interface Ethernet port and converted into DMX signal on the 2 XLR connectors of the interface.

GENERAL SETTINGS

Select the General Settings page icon to choose the interface or software to be controlled, to choose the network settings and enable or disable various page and display options of Wi-Light 2. It is also possible to secure the application with a password (to prevent unauthorised users from changing the advanced settings).



DISPLAY OPTIONS

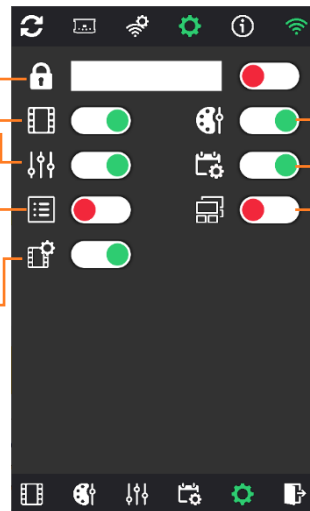
Enable /disable the security option.
Enter a password to secure access
to the Settings

Display / Hide the
Triggers page

Display / Hide the
Channels page

Display buttons in a
grid or a list format

Enable/Disable the
button and Zone
customization



Display / Hide the
Colour Control page

Display / Hide the Timeline
or Interface settings page

Groups the 5 zones in one
single page (all scenes will
follow each other)

ADVANCED NETWORK MODE

Select the network option on top to manually select the network card, choose the local network, internet (user account connection) or both.

When both are selected, the search will first be done on the local network and if no interface or software is found, Wi-Light 2 will connect to the user account entered and display its available interfaces or software.

Displays available network cards on the mobile

Enables/Disables search on local network

Show or change local Network card IP address

Enables/Disables Internet network connection

Enter user Name

Enter user password

Enter a valid e-mail

Displays Login OK to confirm the connection to the user account

Displays Invalid login or password if one field is not correct

Refresh network cards

Confirm the new IP address (Manual setting)

Validate the user name and the user Password to log in

Add a new User (a confirmation email is sent, if email, password and account name are valid and are not yet registered)

Delete the user (a confirmation email is sent)

Password recovery, enter your valid e-mail to recover your forgotten password (a confirmation email is sent)

HOW TO USE WI-LIGHT 2 VIA INTERNET

CREATE YOUR WI-LIGHT 2 ACCOUNT

Launch the Wi-Light 2 application on a device (Android, IOS) connected to an Internet network and go to "Settings" -> "Networks".

1- Select a network with internet access

2- Enable online account login

3- Enter the user name

4- Enter the user password

5- Enter a valid e-mail

6- Create the user (a confirmation email is sent)

7- Confirm creation

Wi-Fi : 192.168.1.12

81.14.105.78

user

password

user@mail.com

Login Ok.

Create Account : user

New user must click on the link received in the email to activate the account.

ADD / REMOVE YOUR INTERFACE TO YOUR ACCOUNT

Connect your interfaces and Wi-Light 2 on the same local network with internet access and go to "Settings" -> "Networks" to choose the right network then go to "Settings" -> "Interfaces".

1- Select the right local network

2- Activate the connection to the local network

3- Choose the interface to add to the account

4- Add the selected interface

5- Confirm addition

Click to remove the selected interface

Wi-Fi : 192.168.1.12

81.14.105.78

user

password

user@mail.com

Login Ok.

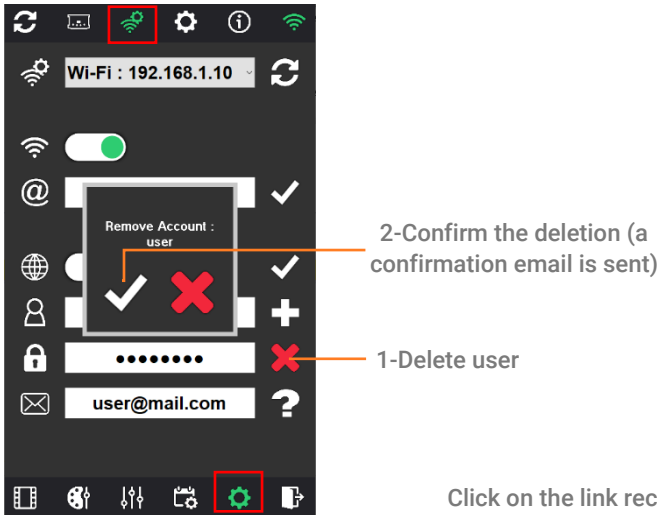
Add Serial : E00016

CONTROL THE INTERFACE VIA INTERNET

Check that the interfaces are connected to a local network with internet access. Connect the device with Wi-Light 2 installed to the network with internet access (Local or 4G) and go to "Settings" -> "Networks", to make sure you are using the right network. Then select the card you want to control in "Settings" -> "Interfaces".

DELETE YOUR ACCOUNT

To delete your account, go to "Settings" -> "Interfaces".

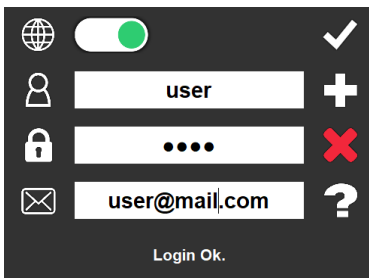


Click on the link received in the email to remove the account.

TROUBLESHOOTING

If you are unable to detect the interface, you should check the following settings:

Wi-Light 2: The "Online" option is activated, the username and password are correct and "Login Ok" is displayed:



Interface:

- Connect the network cable to the interface before turning it on.
- IP and subnet mask correctly configured to match the local network.
- Some local networks may require the following UDP ports to be opened manually:
 - 8011 + 8012 (communication between interfaces and software)
 - 8011 + 8014 (communication between interfaces)
 - 6454 (Art-Net communication)
 - 5568 (sACN communication)
- Verify that local and internet access are both via the same network. If not uncheck one of them from the "Settings" -> "Networks"

IMPORTANT NOTE: Registration of your control interface is not possible using your mobile phone's DPRS/4G/5G network. When registering, turn off GPRS and connect to the correct local network with internet. In the Web Remote configuration, the interface is connected to a local network with Internet access point, and your mobile device running the app must be connected to the same network in order to detect and register the target interfaces for association with your account.

Refer to the relevant interface datasheet for device-specific settings.